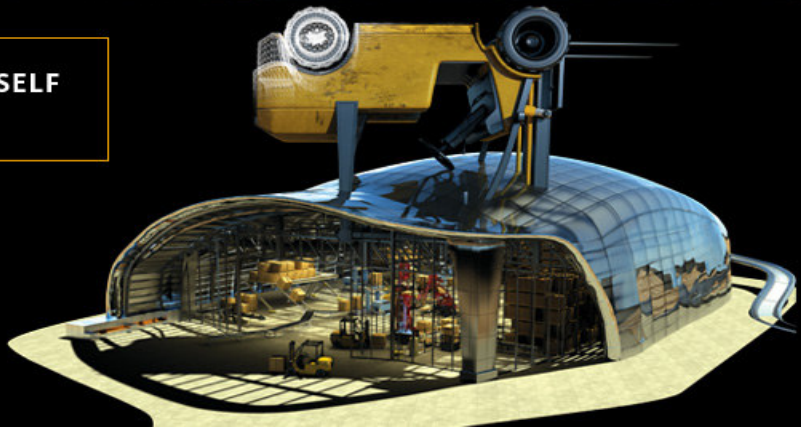


WHAT IF YOU COULD FREE YOURSELF FROM INCOMPATIBILITY?



Legacy Program

Gain the freedom of greater compatibility when you purchase powerful new Autodesk® software with Autodesk® Subscription— and save 30 percent today!

Save yourself from having to re-create lost work as a result of sharing files in different versions, while avoiding costly project delays that can occur at the expense of incompatible software. When you purchase Autodesk® 2010 software with subscription, you'll seize an opportunity to ensure greater compatibility, while minimizing the potential for complications that can disrupt workflows, timelines, and ultimately, the accuracy of designs. This is because of flexible Subscription licensing terms—which let you run both previous or new software versions—so you can finish existing projects uninterrupted, while moving to the new software at your own pace.

Given today's economy, purchasing Autodesk 2010 software with subscription is the best way to keep your productivity high, while preventing time-consuming workarounds from shrinking your profit margins. With Autodesk 2010 software and Subscription, you gain a more efficient manner of working while benefiting from 2D and 3D software tools that let you design, visualize, and simulate your ideas to their fullest extent—before anything is built. Ultimately, it's the best way for you to stay current, compatible, and competitive in today's volatile market.

If you're using one of the following retired Autodesk software releases, you may be eligible to save up to 30 percent on your next Autodesk 2010 software purchase.

General Design & Documentation

AutoCAD® R14, 2000, 2000i, 2002, 2004, 2005, 2006
Autodesk® CAD Overlay R14, 2000, 2000i, 2002
Autodesk® Raster Design 3, 2004, 2005, 2006

Building Solutions

Autodesk® Architectural Desktop 1, 2, 2i, 3, 3.3, 2004, 2005, 2006

Civil Engineering Solutions

Autodesk® Land Desktop 1, 2, 2i, 3, 2004, 2005, 2006
CAiCE™ Visual Transportation Products

Geospatial Solutions

Autodesk Map® 2, 3, 4/2000, 4.5/2000i, 5, 6, 2004, 2005, 2006

Manufacturing Solutions

Mechanical Desktop® 2, 3, 4, 5, 6, 2004 / 2004 DX
AutoCAD® Mechanical 14.5, 2000, 2000i, 6, 2004, 2005, 2006
AutoCAD® Electrical 2004, 2005, 2006
Autodesk Inventor® 3, 4, 5
Autodesk Inventor Series 5, 6, 7, 8, 9, 10

Media & Entertainment

Autodesk® VIZ 2, 3, 3i, 4, 2005, 2006
Autodesk® 3ds Max® 3, 4, 5, 6, 7, 8
Autodesk® Maya® Unlimited 7.0.1, 8
Autodesk® Maya® Complete 7.0.1, 8

Under the Autodesk Legacy program, customers with AutoCAD R14 through 2006-based software licenses have the opportunity to purchase new licenses of current Autodesk products at a 30% discount off the Suggested Retail Price when purchased with Autodesk Subscription. Autodesk® Subscription is required at time of Legacy purchase.

Legacy seats are not upgrades or crossgrades from retired products, but are discounted new seats. Upgrades or crossgrades from retired products are not available for purchase from Autodesk after the retirement of that product. As with upgrades and crossgrades, Legacy Program transactions require a valid serial number from the retired product for each new seat purchased.

* With the purchase of Subscription. Discount is on the suggested retail price of the upgrade purchase only. Autodesk Subscription is not discounted.

**Not all Subscription benefits are available for all products; please check with your sales representative.

***Flexible licensing terms, including previous-version and home-use rights, are subject to certain conditions and may not be available for all software programs or in all locations.